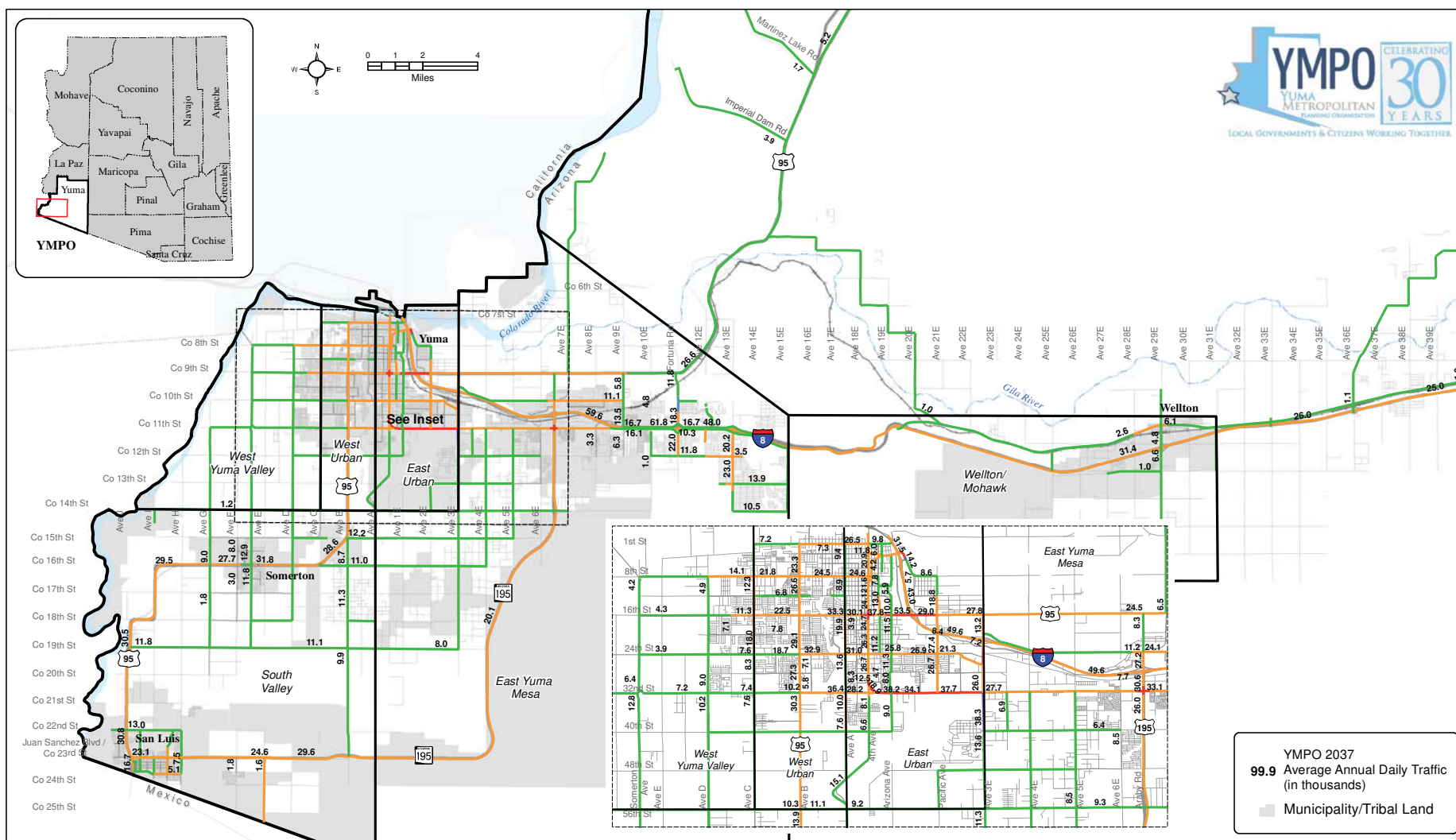


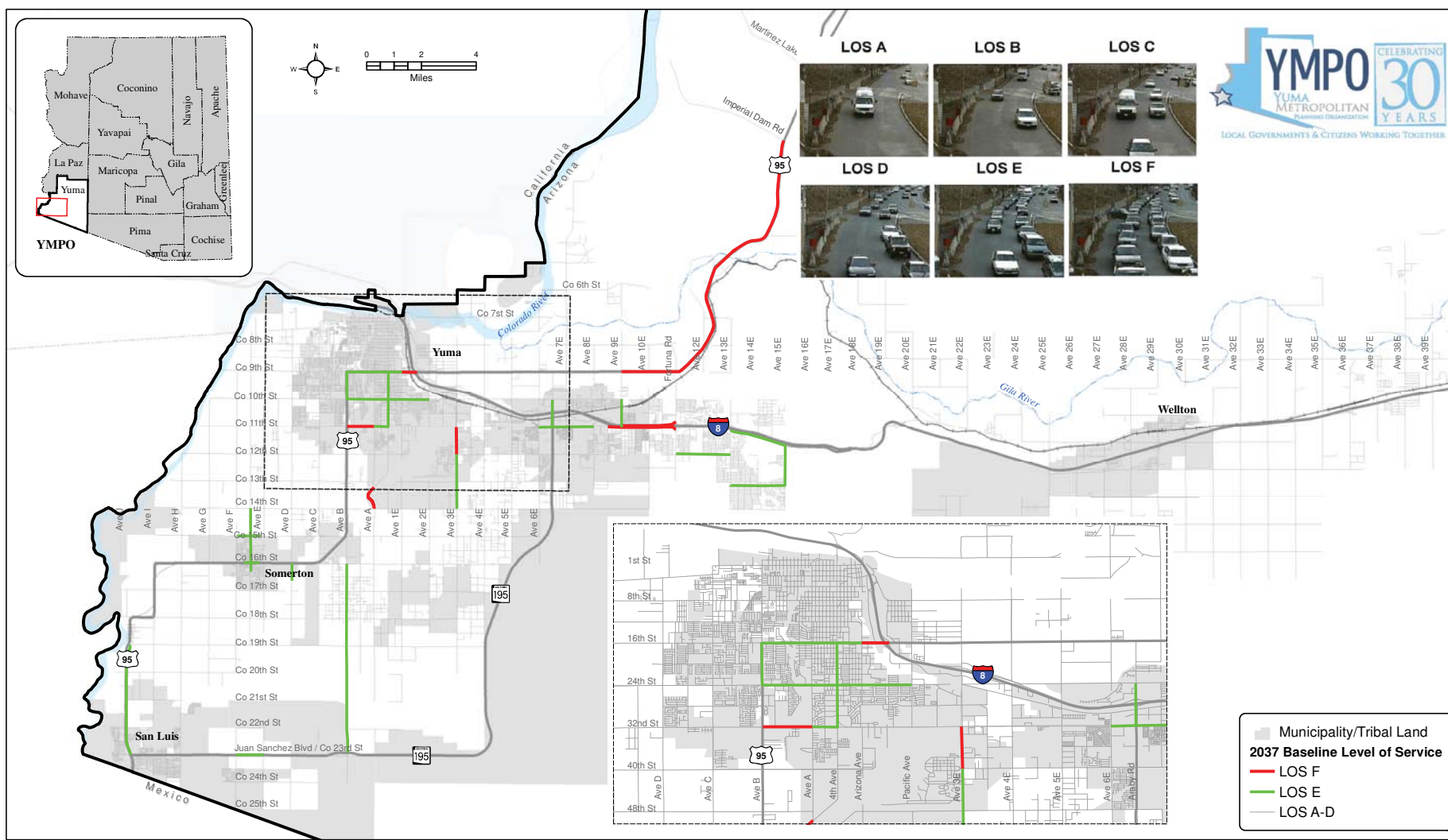


2037 Volumes and Roadway Lanes





2037 Roadway Levels of Service





Revenue Projections for Transportation

2013 Revenues Allocated to Operations and Maintenance

SOURCE	AMOUNT
Yuma County Highway User Fund (HURF)	\$8,000,000
Yuma County Vehicle License tax (VLT)	\$1,000,000
City of Yuma HURF	\$6,000,000
City of Yuma Road Tax	\$3,000,000
City of San Luis HURF	\$2,000,000
City of Somerton HURF	\$1,000,000
Town of Wellton HURF	\$200,000
ADOT	\$10,000,000
TOTAL	\$31,200,000

2013 Revenues Allocated to Capital Improvements

SOURCE	AMOUNT
Yuma County Highway User Fund (HURF)	\$1,000,000
Yuma County Vehicle License tax (VLT)	\$1,000,000
City of Yuma Road Tax	\$2,000,000
ADOT	\$10,000,000
Federal Grants	\$3,000,000
Developer Participation	\$3,000,000
TOTAL	\$20,000,000

Revenue Projection Assumptions

- ◆ Estimated \$1.4 billion available for transportation over the period 2014-2037
 - \$800 million available for operations and maintenance
 - \$600 million available for capital improvements



Elements of the Regional Transportation Plan 2037

- ◆ Roadway system
- ◆ Intelligent transportation systems (ITS)
- ◆ Safety
- ◆ Congestion management
- ◆ Bridges and railroad grade separations
- ◆ Transit
- ◆ Bicycle and pedestrian
- ◆ Travel demand management



Elements of the Regional Transportation Plan 2037

- ◆ Freight
- ◆ Inland ports, warehousing, distribution centers
- ◆ Aviation
- ◆ Border infrastructure
- ◆ Transportation security
- ◆ Trade and tourism
- ◆ Economic development
- ◆ Air quality



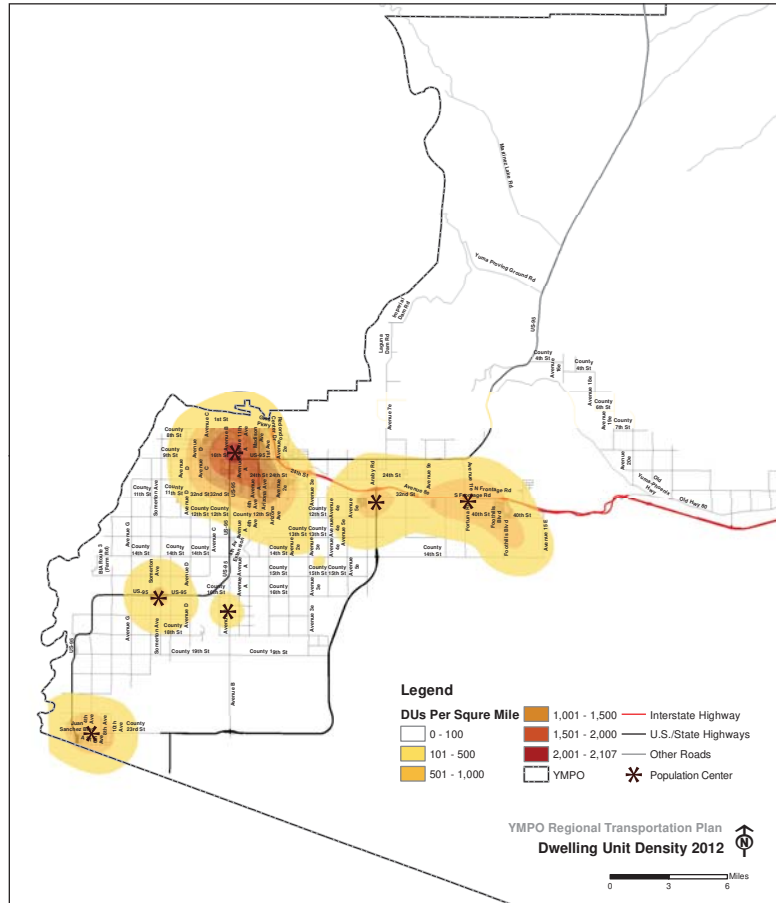
Economic Development Element

- ❖ Transportation improvement projects support economic development by:
 - Improving connectivity and access to existing and future population and employment centers
 - Linking freight-friendly networks with compatible land uses
 - Strengthening ties to regional and international markets

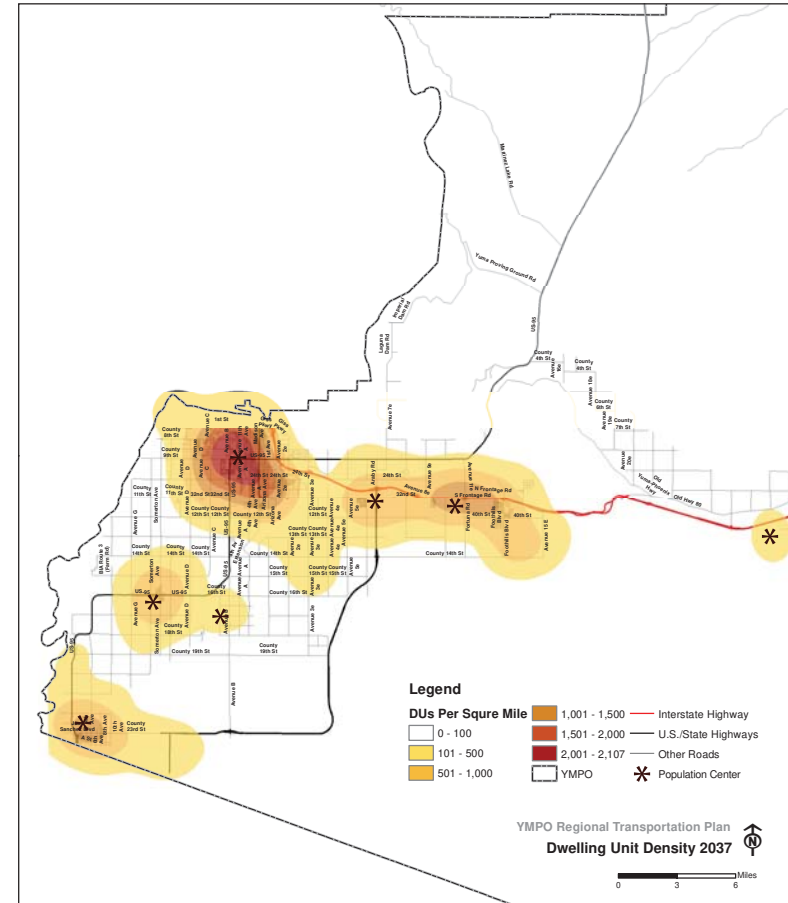


Economic Development Element

Existing Population Centers



Future Population Centers

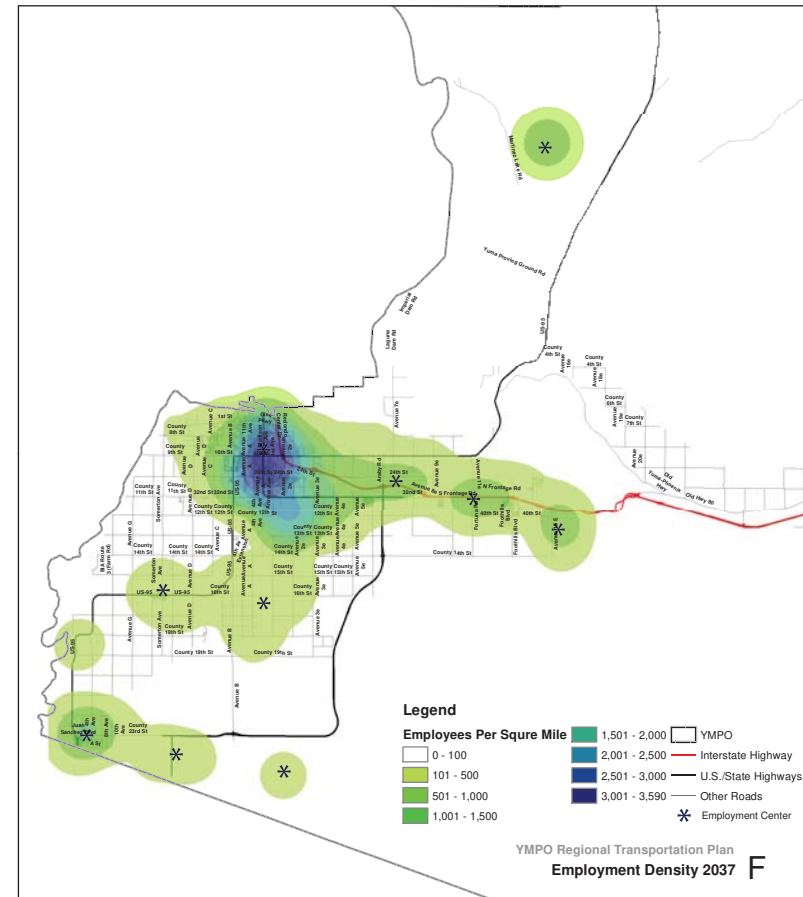
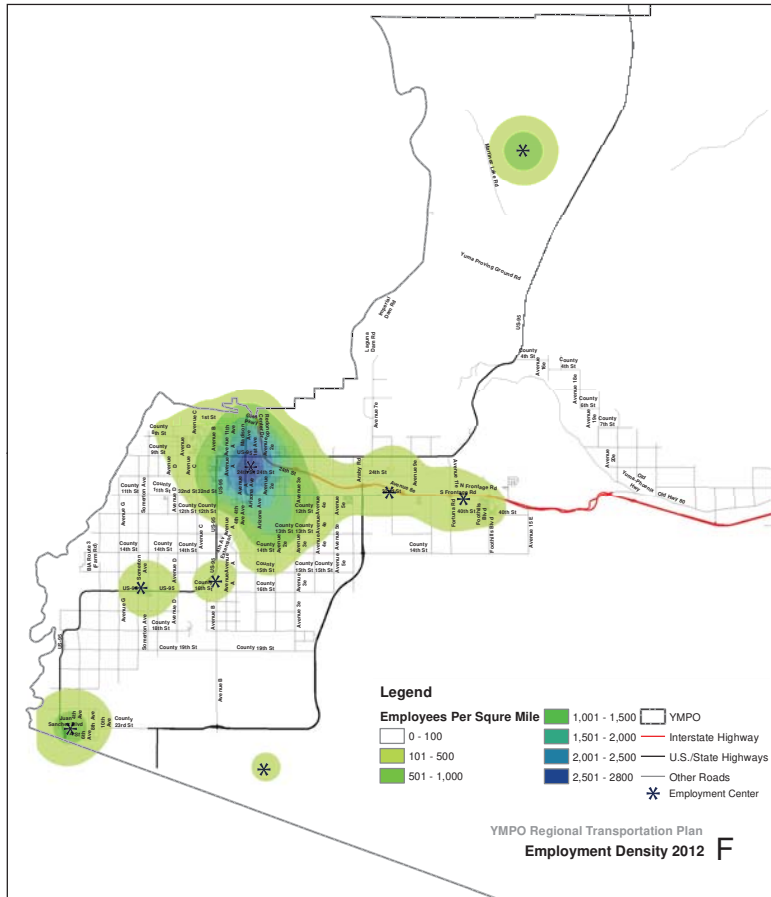




Economic Development Element

Existing Employment Centers

Future Employment Centers





Border Infrastructure Element

- ◆ ADOT has completed the Arizona-Sonora Border Master Plan
- ◆ Plan identified a series of projects based on previous studies
- ◆ Project categories
 - Land Port of Entry (LPOE) projects
 - Multimodal Infrastructure (MMI) projects
 - Rail projects



Bicycle and Pedestrian Element

Preliminary Projects

- ◆ Sidewalks
- ◆ Shared use paths
- ◆ Bicycle routes
- ◆ Bicycle lanes
- ◆ Paved shoulders
- ◆ Bicycle and pedestrian crossings
 - Signalized crossings
 - Refuge islands



Transit Element

Preliminary Projects

- ◆ Hotel Del Sol Multimodal Facility
- ◆ New bus maintenance facility
- ◆ Regular vehicle replacements
- ◆ Bus pullouts
- ◆ More passenger amenities
- ◆ Smartcards, real-time arrival system
- ◆ Park-and-ride lots



Performance Criteria

- ◆ Addresses identified safety issues
- ◆ Preserves existing infrastructure
- ◆ Addresses identified congestion issues
- ◆ Improves system connectivity and efficiency
- ◆ Promotes economic development
- ◆ Encourages multimodal travel
- ◆ Improves air quality

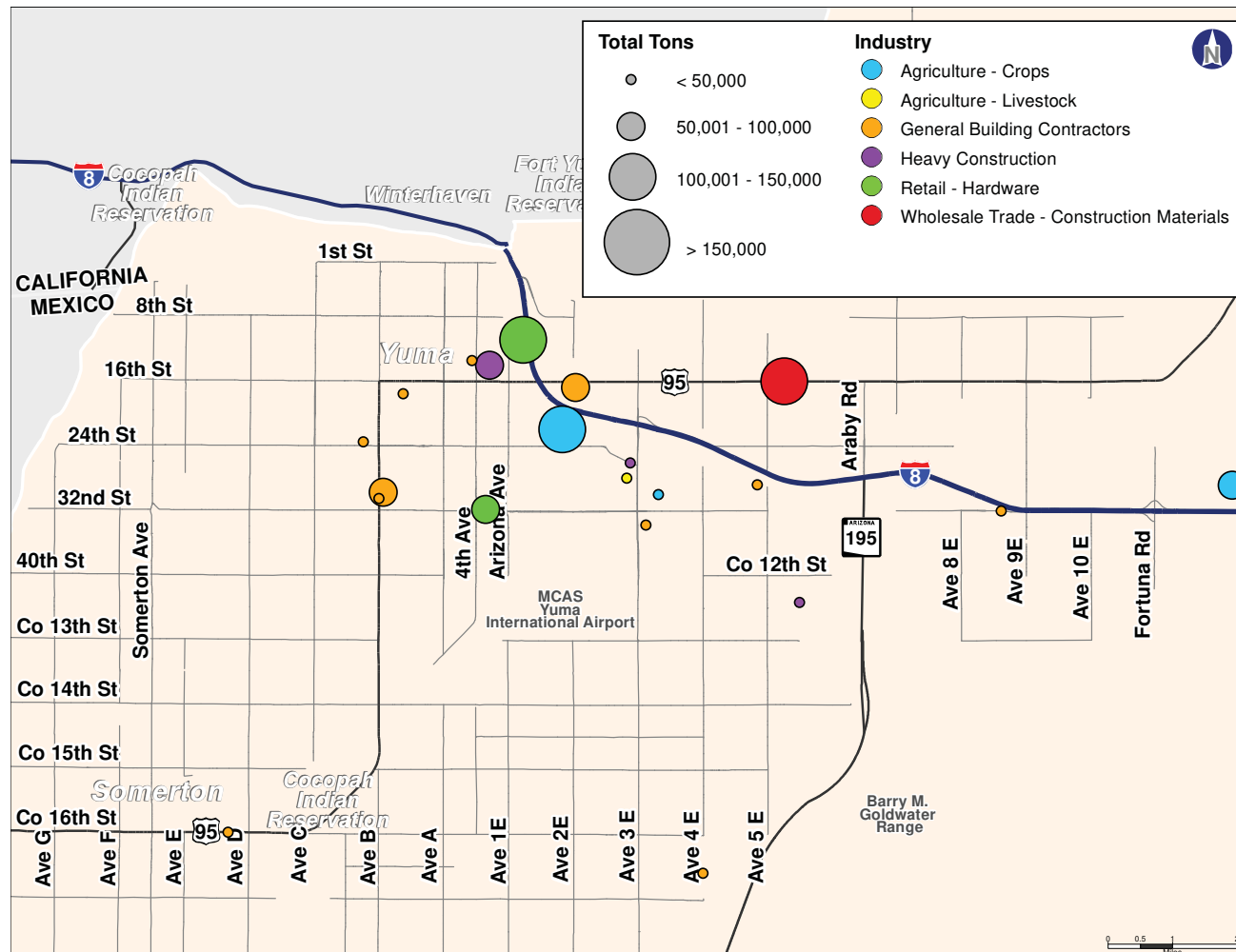


Regional Needs From Recent Studies

- YMPO HSIP Study (2013)
- San Luis SATS (2009)
- Somerton PARA (2013)
- Wellton PARA (2011)
- Yuma Expressway PARA (2012)
- Cocopah PARA (2012)
- YCAT PARA (2012)
- YMPO Rail Study (2013)
- Yuma County Foothills PARA (2012)
- ADOT San Luis Binational Study (2013)
- ADOT Border Master Plan (2012)



Freight Element



Source: Yuma County Rail Corridor Study